



The Case for the Cutting Edge

Matt Farmer
Lambda Conf 2015

Agenda

- Who we are.
- Lessons We've Learned
- Why the Cutting-Edge

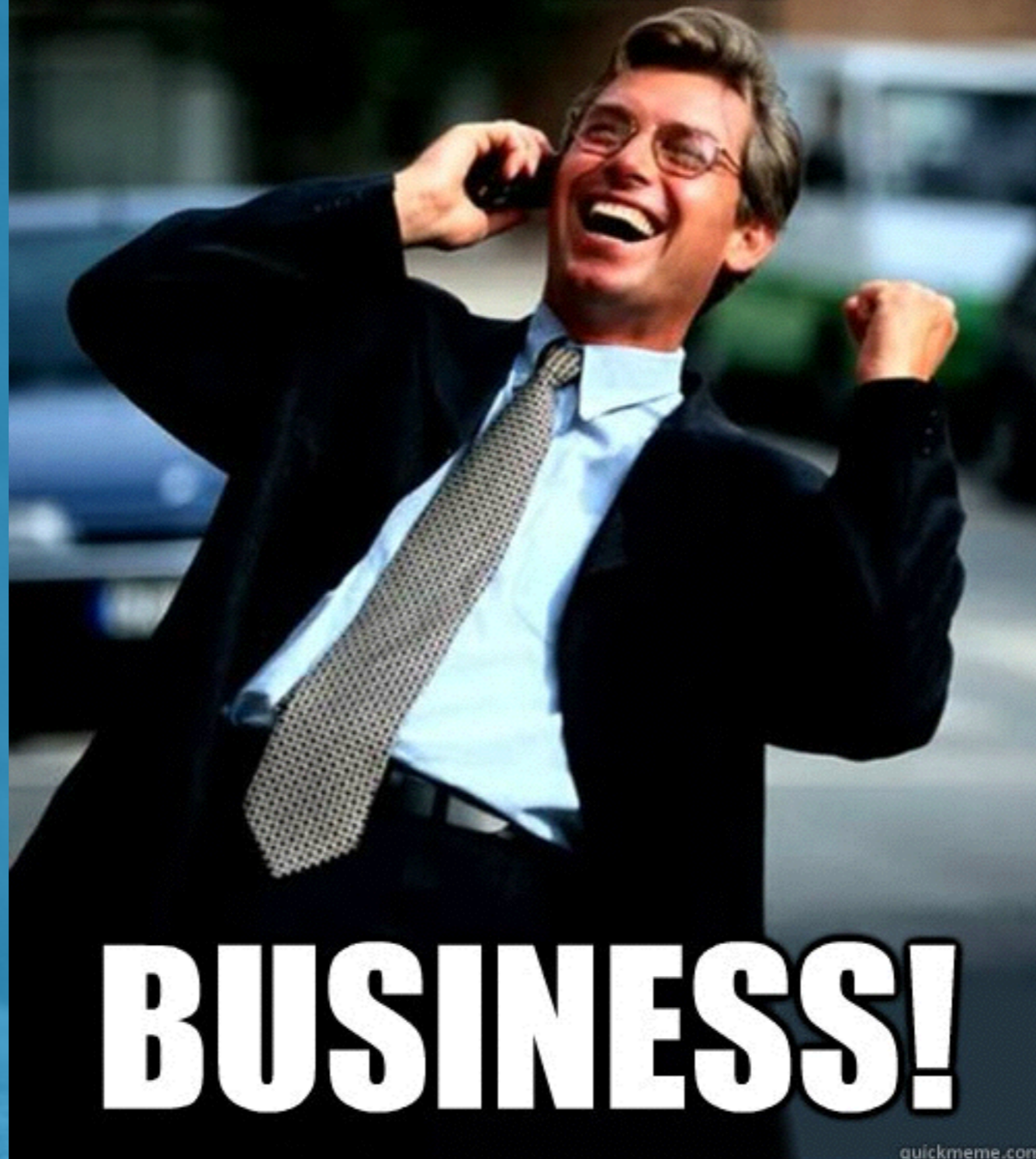






“Supply Chain Operating Network”

HA HA!



BUSINESS!



“Supply Chain Operating Network”



Lessons Learned in Pursuing the Cutting-Edge



Lesson One:
Engineering isn't lost in translation.

21214-

9-18-62

Engineering isn't lost in translation.

- 60 responses
- About 5 had actual Scala experience.
- 8.3%





Scala Engineer

21214-

9-18-62

Software Engineer

21214-

9-18-62

Culture fit

Knows how to pronounce GIF

In our time zones

We have time to train

Software Engineer

Cost of compensation

Enjoys GIFs

Willingness to learn

Asks for help early

Good written communication

21214-

9-18-62



Lesson One:
Engineering isn't lost in translation.

21214-

9-18-62

A man in a workshop, wearing a light-colored jumpsuit and gloves, is kneeling on the floor and working on the front of a car. The car's hood is open, and the man is using a tool to work on the engine area. The workshop is filled with various tools and equipment, including a workbench with a vise and a shelf with various items. The scene is overlaid with a blue tint.

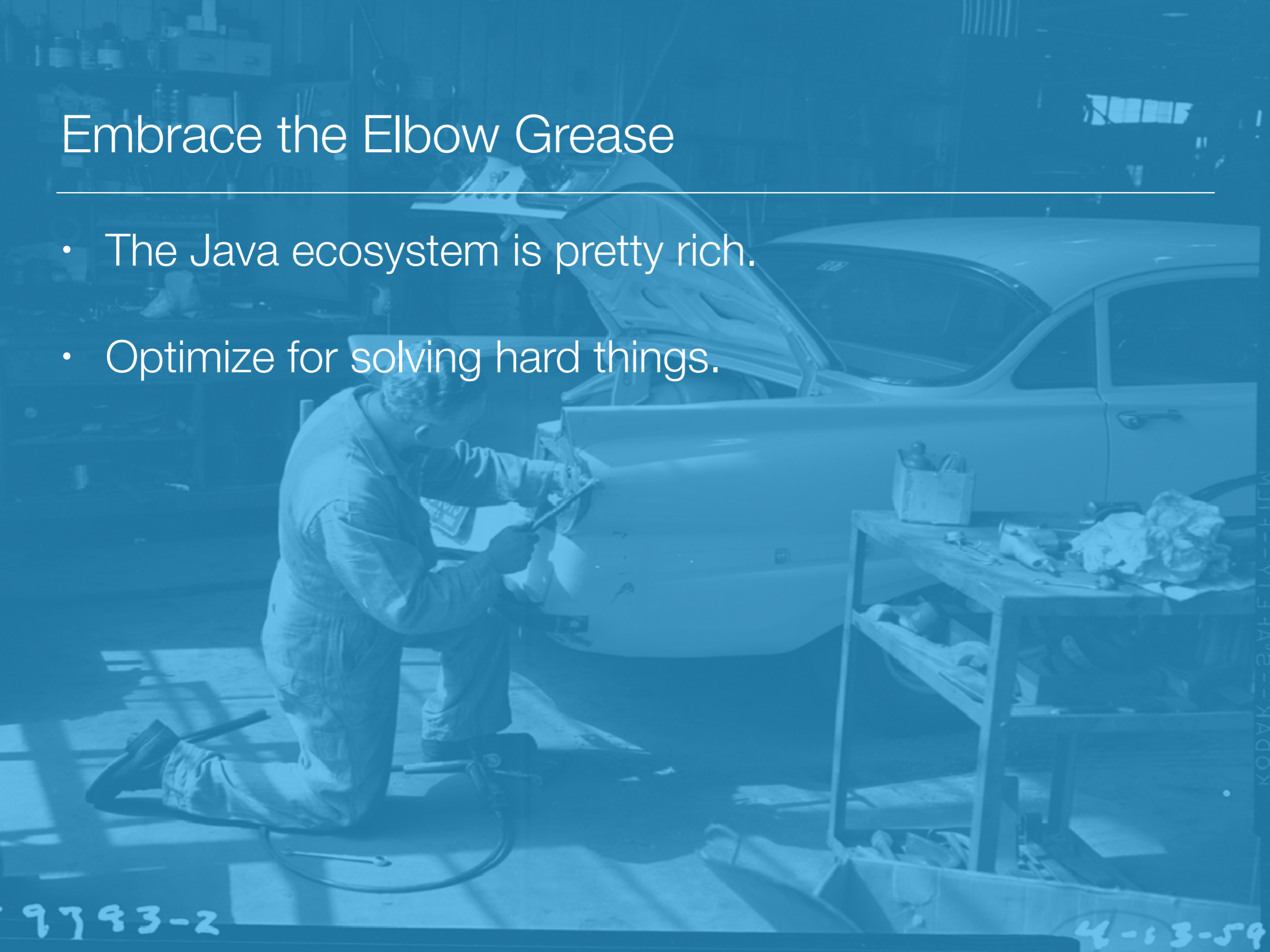
Lesson Two: Embrace the Elbow Grease

9793-2

4-13-59

Embrace the Elbow Grease

- The Java ecosystem is pretty rich.
- Optimize for solving hard things.



9793-2

4-13-59

A blue-tinted photograph of a man in a workshop, kneeling and working on the front of a car with its hood open. The man is wearing a light-colored jumpsuit and is focused on his task. The workshop is filled with various tools and equipment, including a workbench with a vise and a shelf with various items. The overall scene is a classic representation of a mechanic at work.

Lesson Two: Embrace the Elbow Grease

9793-2

4-13-59

A blue-tinted photograph of a lecture hall. The foreground is filled with rows of empty wooden chairs. In the background, a chalkboard is divided into several sections, each containing handwritten mathematical notes and diagrams. To the left of the chalkboard, there is a small table with a lamp and some papers. The overall atmosphere is academic and quiet.

Lesson Three: Engage the Learning Curve

Engage the Learning Curve

- Ourselves
- New team members

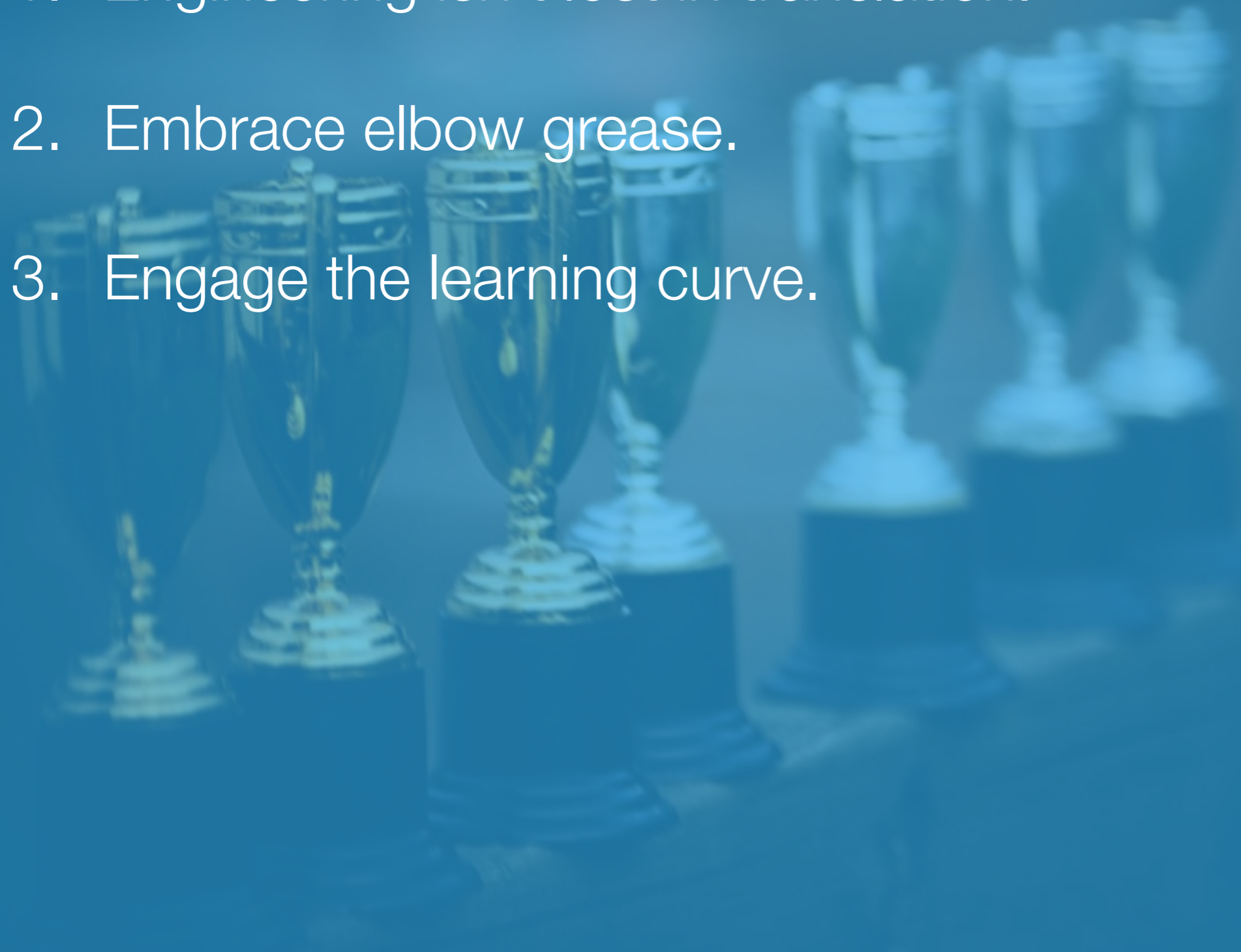


A blue-tinted photograph of a lecture hall. The foreground is filled with rows of empty wooden chairs. In the background, a chalkboard is divided into several sections, each containing handwritten mathematical notes and diagrams. To the left of the chalkboard, there is a small table with a lamp and some papers. The overall atmosphere is academic and quiet.

Lesson Three: Engage the Learning Curve

Three Lessons

1. Engineering isn't lost in translation.
2. Embrace elbow grease.
3. Engage the learning curve.



A row of trophies, possibly silver or chrome, is arranged in a line on a dark surface. The trophies are of various sizes and designs, some with multiple cups. The background is a solid, deep blue. The text "It's a hard choice to make." is overlaid in white, centered horizontally.

It's a hard choice to make.

A row of seven trophies, likely silver or chrome, standing on a reflective surface. The trophies are arranged in a line, receding into the distance. The background is a solid, deep blue. The text "It's worth it." is centered over the trophies in a white, sans-serif font.

It's worth it.

Thank you!

matt@frmr.me

<http://farmdawgnation.com>

[@farmdawgnation](#)

Creative Commons Attributions

- “Saw Blade” <https://flic.kr/p/7jr8rR>
- “Engineering Drafting Room, 1962” <https://flic.kr/p/6UKMsf>
- “Mechanic at Charles Street Shops, 1959” <https://flic.kr/p/6LTb19>
- “old-MIT-classroom_Ryan-Tyler-Smith.jpg” <https://flic.kr/p/nm2s5h>
- “Trophies” <https://flic.kr/p/6KLcab>
- “Project 365 #27: 270114 Curtain Up, Light the Lights!” <https://flic.kr/p/jyVELR>